

30 Acres - 898 Nathan Dean Highway, Rockmart, GA 30153

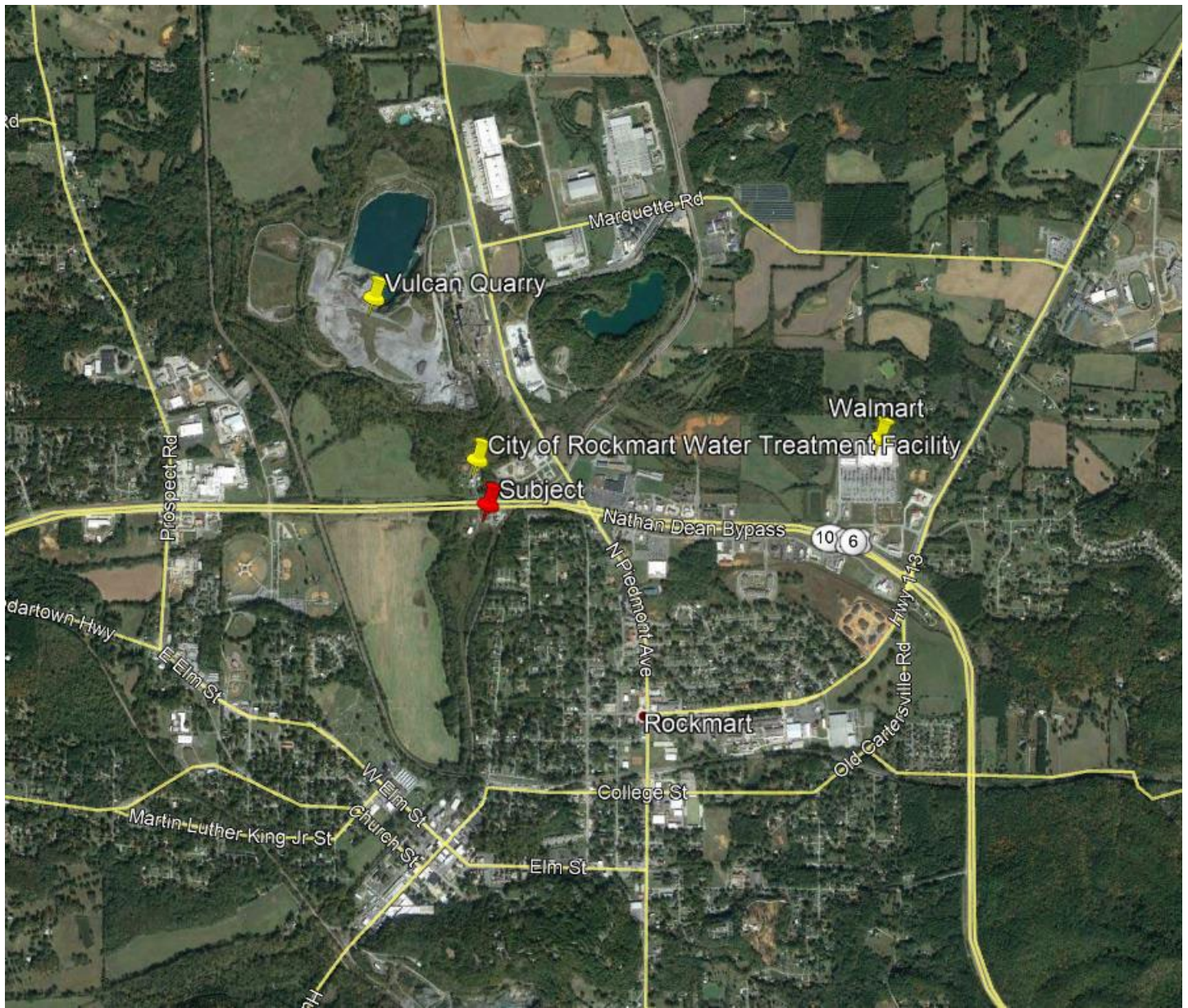
Includes 5,000sf & 2,400sf buildings and 4 curb cuts on Nathan Dean

Tax #054-142 & Tax #054-143

Zoned I-2 - General Industrial







Contact information:

Terry Schwindler, CECD
President/CEO
Development Authority of Polk County
133 South Marble Street
Rockmart, GA 30153
O: (770) 684-5686
C: (470) 842-4328
Terry@ChoosePolk.com
www.ChoosePolk.com