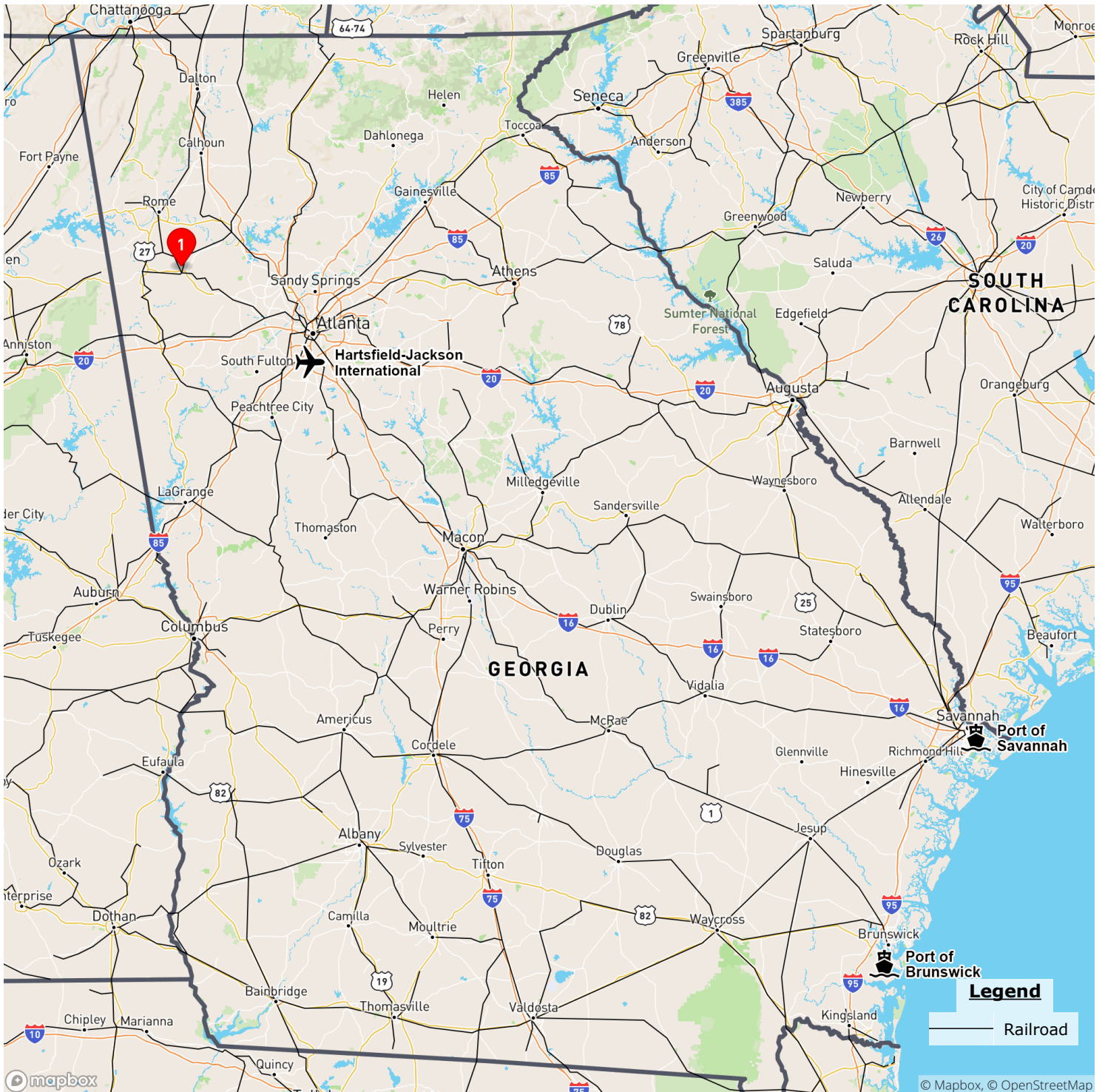


# Overview Map



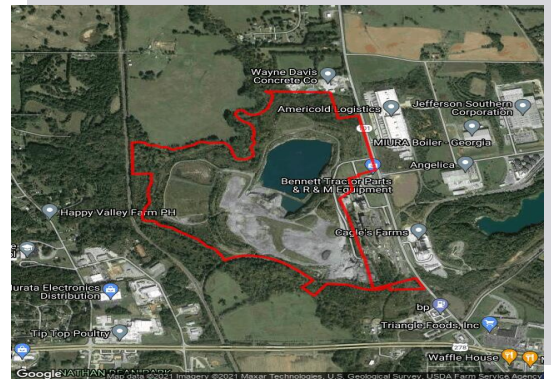
1 Rockmart Vulcan Site

## Rockmart Vulcan Site

Rockmart, GA 30153  
Polk County

### Contact

Chris Thomas  
Development Authority of Polk County  
770-684-5686  
chris@choosepolk.com



### Property

**Total Acres:** 207 acres  
**Remaining Acres:** 207 acres  
**Largest Tract:** 80 acres  
**Zoning:** Heavy Industrial  
**Sale or Lease:** Sale  
**GRAD Site:** No  
**Former Use:** Quarry

### Utilities

**Water on Site:** Yes  
**Water Main Size:** 10 inches  
**Sewer on Site:** Yes  
**Sewer Main Size:** 8 inches  
**Gas on Site:** Yes  
**Gas Main Size:** 6 inches  
**Electric Provider:**\* Georgia Power

\* Customer will have choice of provider if load is above 900 kW

### Workforce

**County Laborforce:**<sup>1</sup> 18,457  
**County Average Weekly Wage:** \$771  
**County Unemployment Rate:** 2.9%

### Taxes

**County Effective Property Tax:** \$9.64 per thousand dollars FMV  
**Total County Millage Rate:** 24.089  
**Sales Tax:** 7%

### Incentives

**Job Tax Credit:** \$3,000/job  
**Freeport:** 1 2 3 4  
County 100% 100% 100% 0%  
City 100% 100% 100% 0%  
**Incentive Zones:**  
New Market Tax Credit

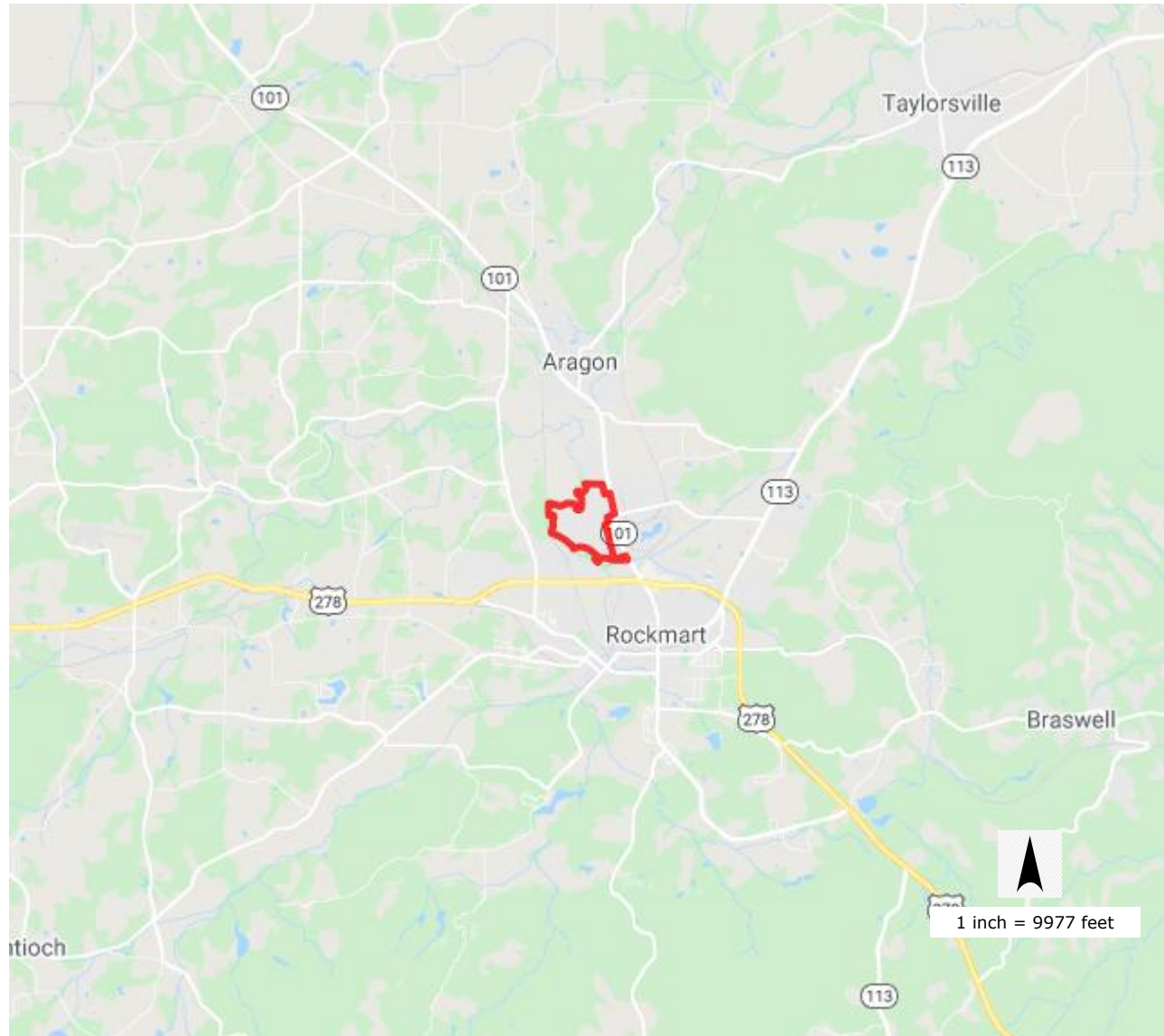
### Transportation

**Nearest International Airport:** Hartsfield-Jackson Atlanta International, 44.1 miles  
**Nearest Interstate:** I 75, 18.9 miles  
**Nearest Port 1:** Port of Savannah, 264.4 miles  
**Nearest Port 2:** Port of Brunswick, 285.4 miles  
**Nearest Intermodal:** Whitaker Rail Yard, 25.7 miles  
**Rail Served:** Yes  
**Rail Provider:** Norfolk Southern

## Rockmart Vulcan Site

Rockmart, GA 30153

Polk County





## Rockmart Vulcan Site

Rockmart, GA 30153

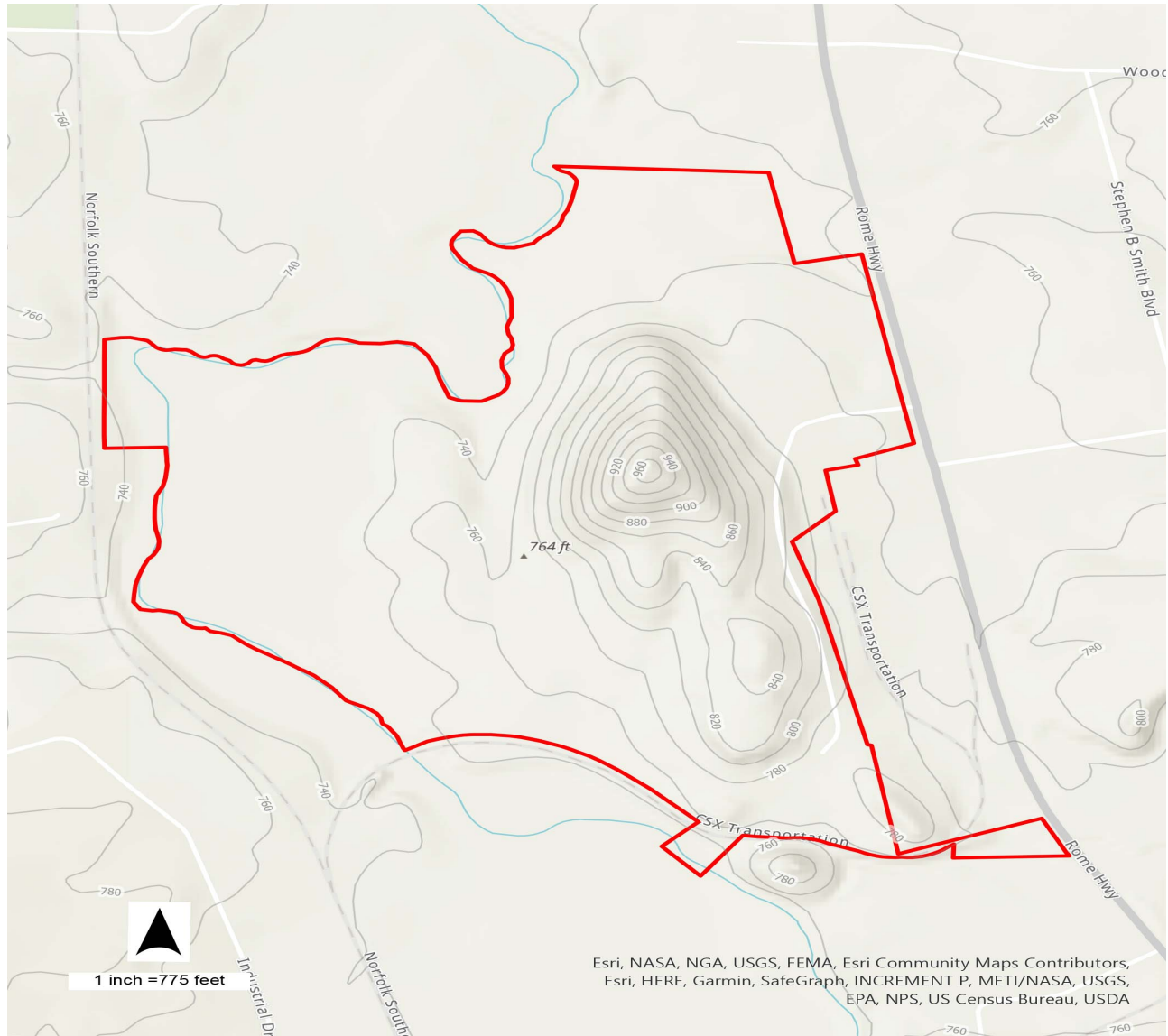
Polk County



## Rockmart Vulcan Site

Rockmart, GA 30153

Polk County



# Demographics Report

## Rockmart Vulcan Site

	5 mile	10 mile	15 mile
<b>Population Summary</b>			
2000 Total Population	12,793	27,509	89,425
2010 Total Population	14,148	33,932	114,913
2020 Total Population	15,064	36,206	129,278
2020 Group Quarters	0	12	950
2025 Total Population	15,364	37,085	137,075
2018-2023 Annual Rate	0.40%	0.48%	1.18%
2020 Total Daytime Population	14,919	31,096	111,480
Workers	6,422	11,036	40,581
Residents	8,497	20,060	70,899
<b>2020 Population by Race/Ethnicity</b>			
Total	15,065	36,206	129,277
White Alone	79.8%	82.6%	78.3%
Black Alone	14.8%	12.0%	13.4%
American Indian Alone	0.3%	0.3%	0.4%
Asian Alone	0.7%	0.6%	0.9%
Pacific Islander Alone	0.0%	0.0%	0.1%
Some Other Race Alone	1.9%	2.4%	4.5%
Two or More Races	2.4%	2.2%	2.5%
Hispanic Origin	3.7%	4.7%	8.9%
Diversity Index	38.7	36.6	47.2
<b>2020 Population 25+ by Educational Attainment</b>			
Total	10,360	24,952	87,375
Less than 9th Grade	3.1%	4.6%	5.2%
9th - 12th Grade, No Diploma	10.4%	11.1%	9.8%
High School Graduate	32.8%	30.1%	28.5%
GED/Alternative Credential	8.7%	8.3%	7.4%
Some College, No Degree	22.1%	22.6%	22.5%
Associate Degree	8.5%	8.6%	8.6%
Bachelor's Degree	7.0%	8.5%	11.1%
Graduate/Professional Degree	7.4%	6.2%	7.0%
<b>2020 Workforce and Employed Population 16+ by Industry</b>			
2020 Civilian Population Age 16+ in Labor Force (Esri)	6,892	16,839	61,035
2020 Unemployed Population Age 16+ (Esri)	288	576	2,192
Total Employed	6,604	16,263	58,843
Agriculture/Mining	1.2%	1.0%	0.6%
Construction	8.5%	11.4%	11.2%
Manufacturing	26.0%	19.2%	16.0%
Wholesale Trade	4.4%	3.8%	2.6%
Retail Trade	11.1%	12.4%	11.8%
Transportation/Utilities	4.4%	5.2%	7.0%
Information	2.3%	1.7%	1.6%
Finance/Insurance/Real Estate	1.1%	2.7%	4.5%
Services	36.5%	38.0%	40.2%
Public Administration	4.6%	4.6%	4.5%
<b>Median Household Income</b>			
2020	\$51,514	\$54,785	\$57,588
2025	\$55,707	\$60,296	\$63,972
<b>Median Home Value</b>			
2020	\$132,759	\$154,142	\$178,818
2025	\$150,966	\$183,423	\$214,853
<b>Median Age</b>			
2020	39.2	39.2	38.0
2025	40.5	40.6	38.9



# Demographics Area Map

## Rockmart Vulcan Site

Rockmart, GA 30153

Polk County

