

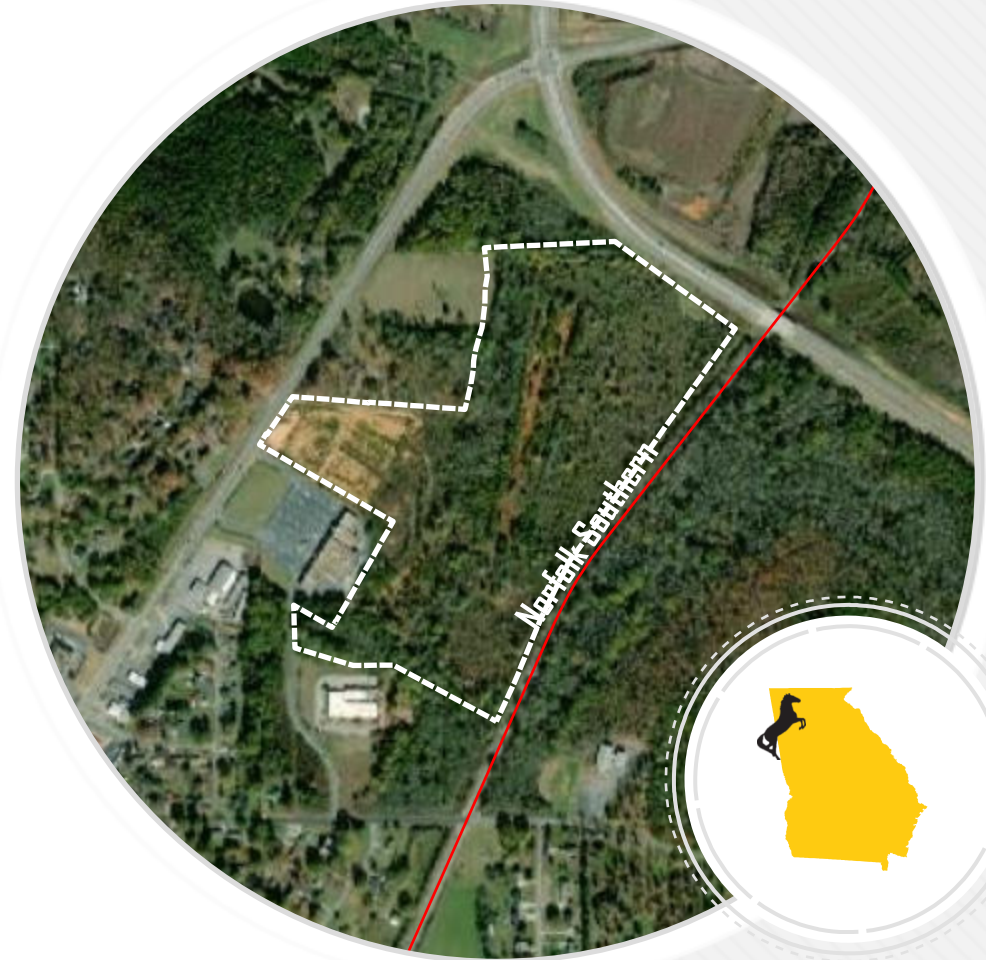
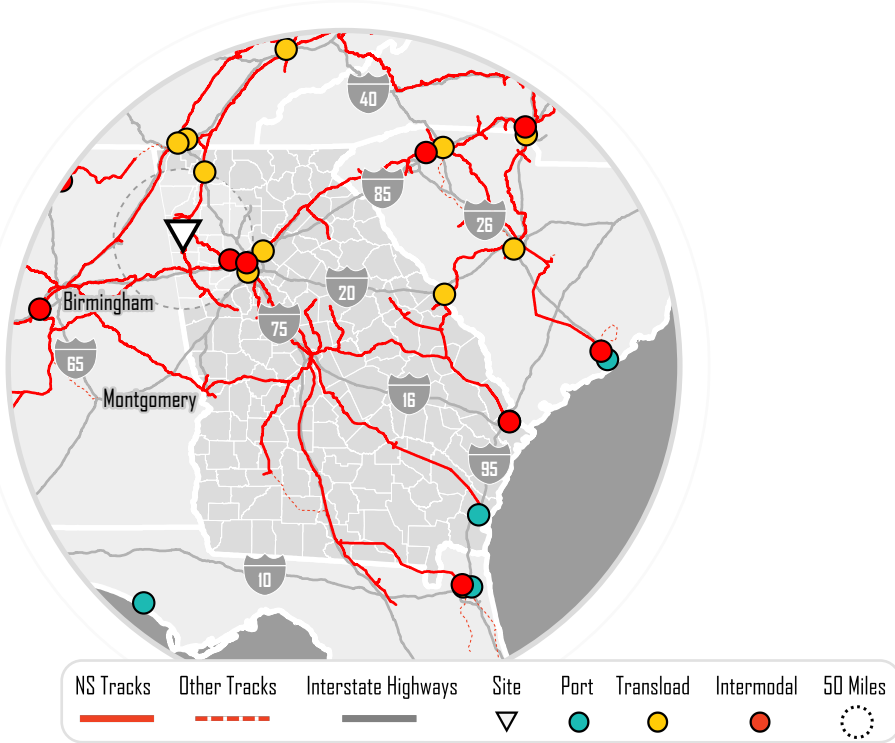
NARRENDER REDDY PROPERTY

65 ACRES

City: Cedartown | County: Polk | State: GA

NS Site Type: SITE AVAILABLE

- ▶ **Ownership:** Single Owner
- ▶ **Zoning:** Industrial
- ▼ **Map:** Transportation Assets



-85.236944°, 34.0375°

1/25/2023



Direct Rail Service
Norfolk Southern Railway



Interstate 20
Proximity To Interchange: 24 miles



**Hartsfield-Jackson Atlanta
International Airport**
Proximity: 65 miles

For more information about this site please contact >>

Ryan Heffern: Industrial Development Manager

Phone: 404-877-2600

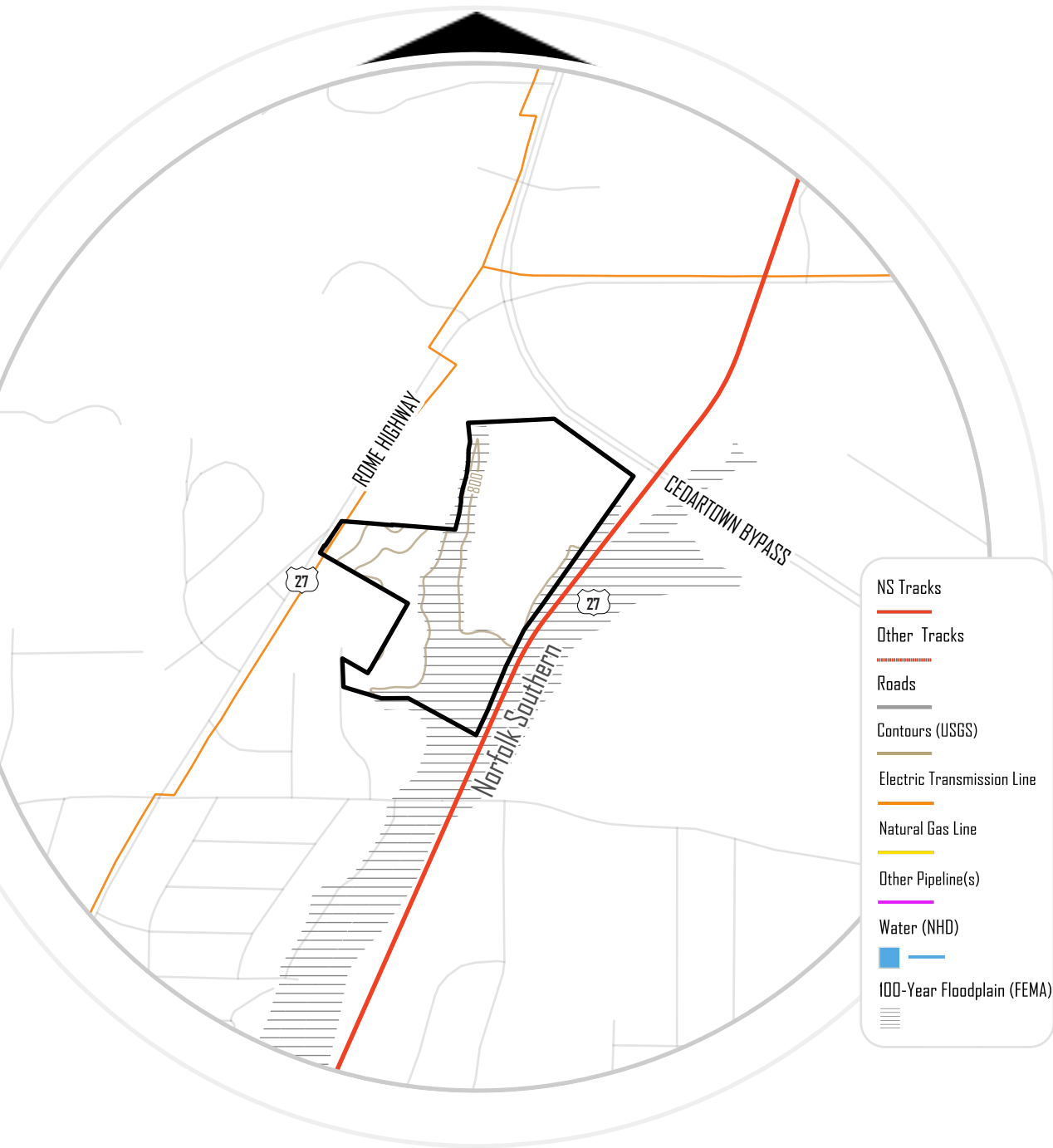
Email: ryan.heffern@nscorp.com



Site Location: Cedartown, GA

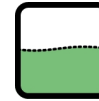
Technical Name: GA-POLK-4

NARRENDER REDDY PROPERTY



Site Description:

Largest Contiguous Area: 65 Acres
Total Site Area: 65 Acres



Topography: Slightly Sloping

Min Elevation: 790 FT.
Max Elevation: 860 FT.



Utility Providers:

Electric: Georgia Power Company.
Gas: Georgia Natural Gas Company.
Water: City of Cedartown.
Sewer: City Of Cedartown.



Sustainability:

Railroads are on average 75% more efficient than truck, moving a ton of freight 470 miles on a single gallon of fuel. This is becoming increasingly important to companies as they set targets to reduce supply chain emissions.

Learn more about Norfolk Southern's industry-leading sustainability efforts and how we can partner with you to both lower and offset your carbon footprint, making the world a greener place.

<http://www.nscorp.com/content/nscorp/en/about-ns/sustainability/carbon-calculator.html>