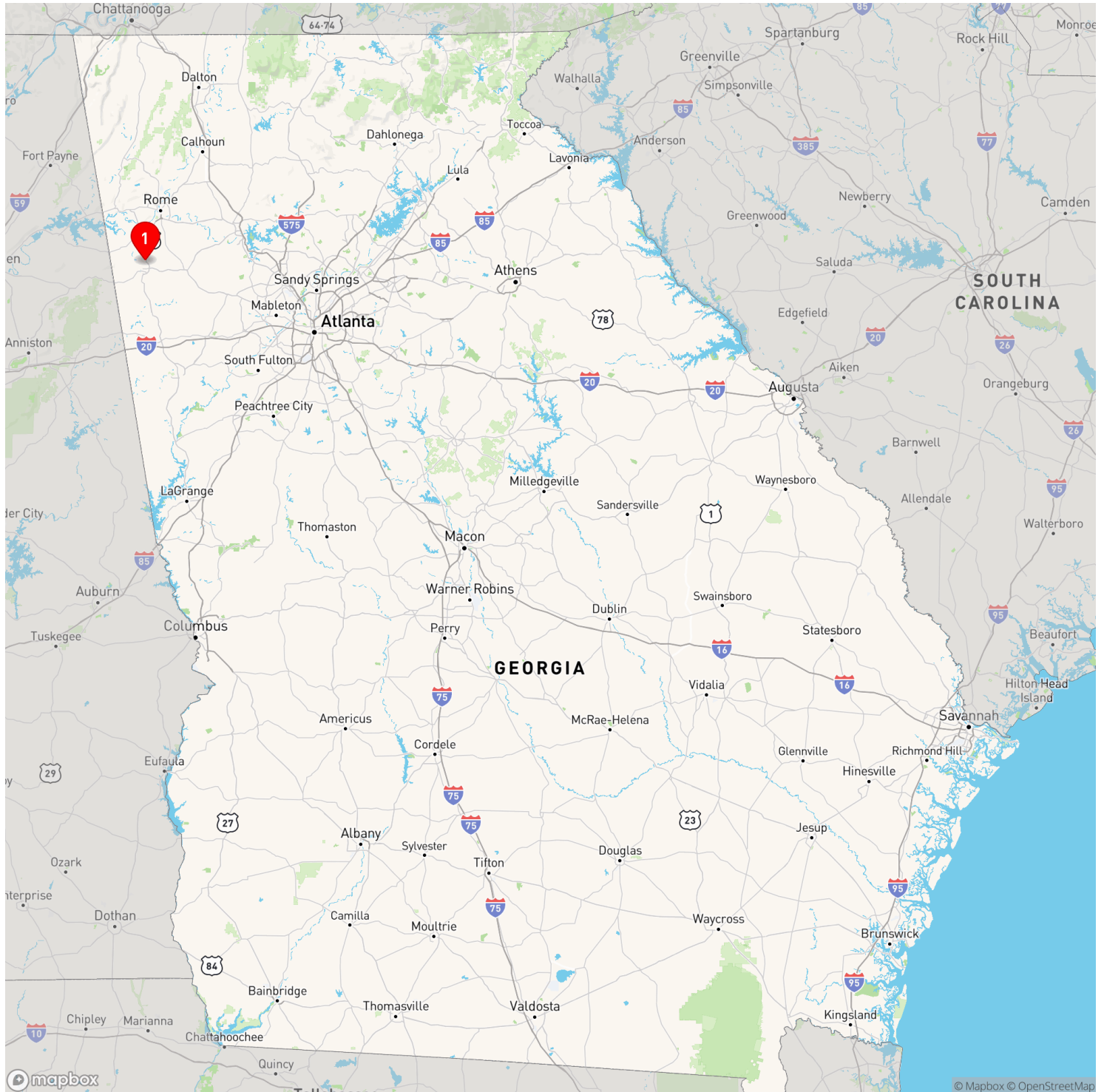


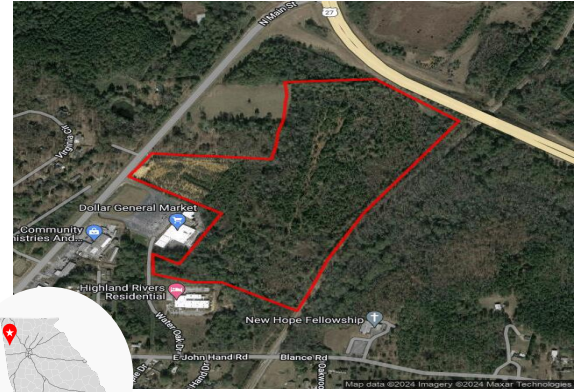
Overview Map



1 Narrender Reddy Property

Narrender Reddy Property

Cedartown, GA 30125, Polk County



Property

Total Acres:	69 AC	Water on Site:	Yes
Remaining Acres:	69 AC	Water Main Size:	6 IN
Largest Tract:	69 AC	Sewer on Site:	Yes
Sale or Lease:	Sale	Sewer Main Size:	8 IN
Zoning:	Industrial	Gas on Site:	Yes
Former Use:	Undeveloped	Gas Main Size:	2 IN
GRAD Site:	No	Electric Provider:*	Georgia Power

* Customer will have choice of provider if load is above 900 kW

Source: Georgia Power Economic Development



Taxes & Incentives

Job Tax Credit:	\$3,000/job
County Millage Rate:	23.732
County Property Tax:	\$9.49 per \$1000 FMV
Total Sales Tax:	7%
County Freeport:¹	1: 100% 2: 100% 3: 100% 4: 0%

Incentive Zones

None

Sources: Georgia Dept. of Revenue, Georgia Dept. of Community Affairs



Transportation

International Airport:	Hartsfield-Jackson Atlanta International, 53.9 miles	Port 1:	Port of Savannah, 274.6 miles
Interstate:	I 20, 23.7 miles	Port 2:	Port of Brunswick, 294.3 miles
Rail Provider:	Norfolk Southern	Inland Port:	Appalachian Regional Inland Port, 65.2 miles
		Intermodal:	Whitaker Rail Yard, 35.9 miles

Sources: Georgia Dept. of Transportation, Georgia Ports Authority



Workforce

Laborforce	
Polk County:	19,234
Draw Area: ²	245,822

Unemployment Rate	
Polk County:	3.2%
Georgia:	3.1%
US:	4.2%

Average Weekly Wage	
Polk County:	\$875
Draw Area: ²	\$954
Georgia:	\$1,197
US:	\$1,300

Source: Georgia Dept. of Labor



Demographics

Population	
Polk County:	43,590
Draw Area: ²	505,737

Median Age	
Polk County:	38.2
Georgia:	37.5
US:	39.1

Percent College Degree ³	
Polk County:	21.7%
Georgia:	44.9%
US:	45.7%

Source: ESRI 2023



Contacts

Property Contact:
Chris Thomas
Development Authority of Polk County
770-684-5686
chris@choosepolk.com

For more details, contact your local Georgia Power Regional Economic Development Manager:
Tamara Brock
Georgia Power Economic Development
706-477-7009
twbrock@southernco.com

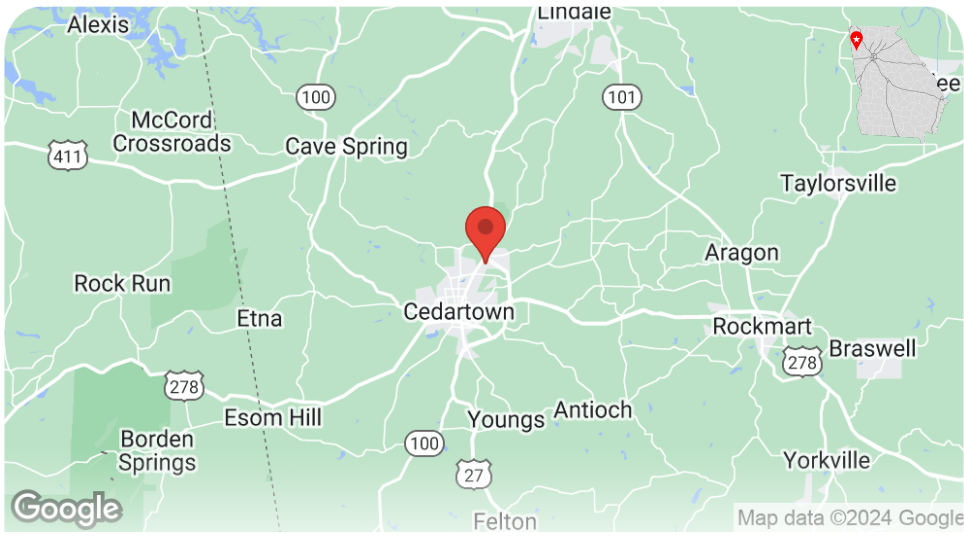
¹ Level 1 - Business inventory is exempt from state property taxes for the following categories - 1: raw materials, 2: finished goods, 3: finished goods awaiting shipment outside of GA, 4: fulfillment center stock in trade

² Includes county and adjoining counties ³ Population 25 and older with an Associates degree or higher
This information is provided "as is" without warranty of any kind either express or implied.

Narrender Reddy Property

Cedartown, GA 30125, Polk County

Location Map



Aerial Map

