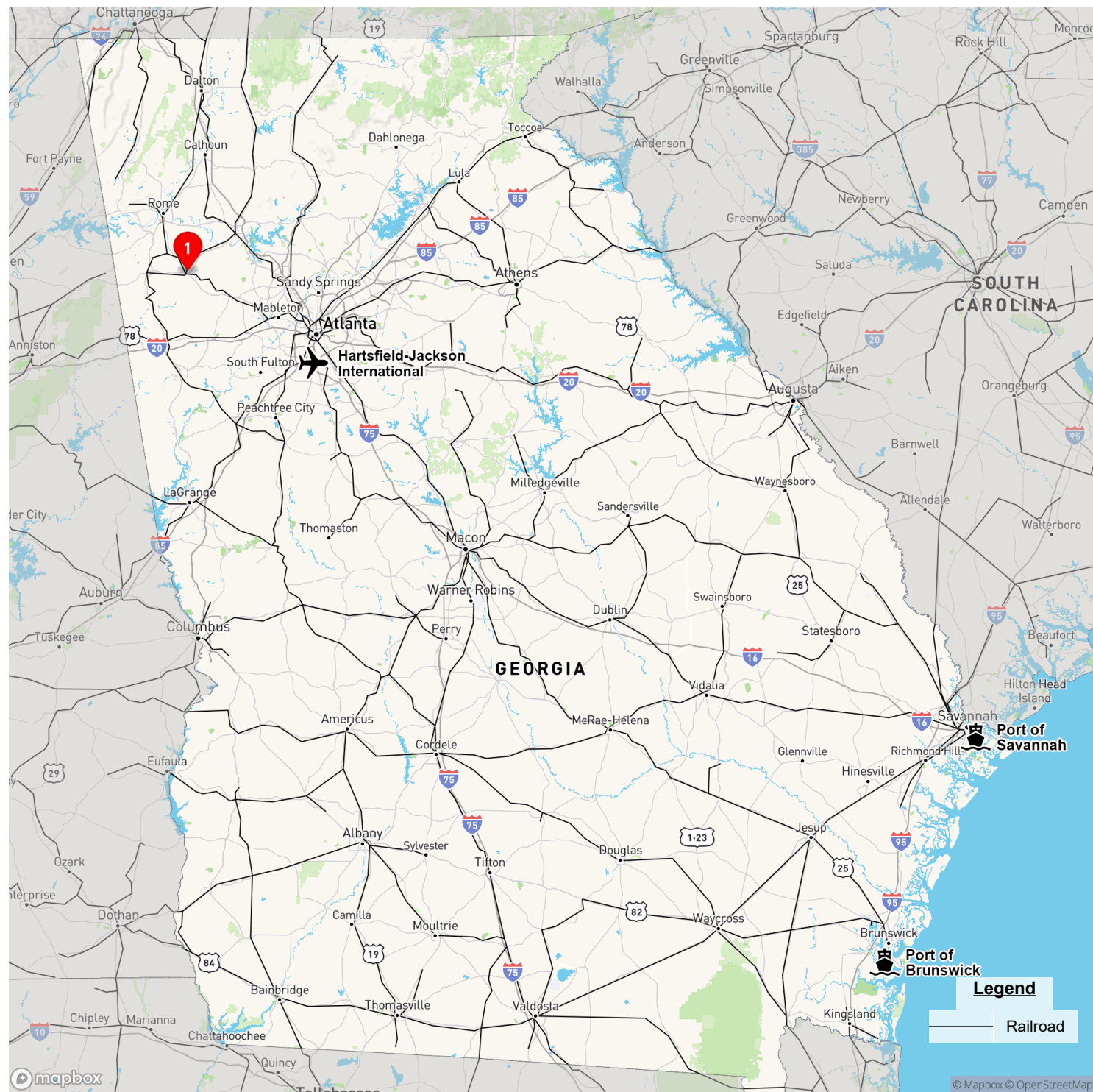


Overview Map



1 Rockmart Technology Park

Rockmart Technology Park

Rockmart, GA 30153, Polk County



Community
& Economic
Development

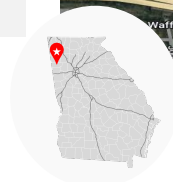
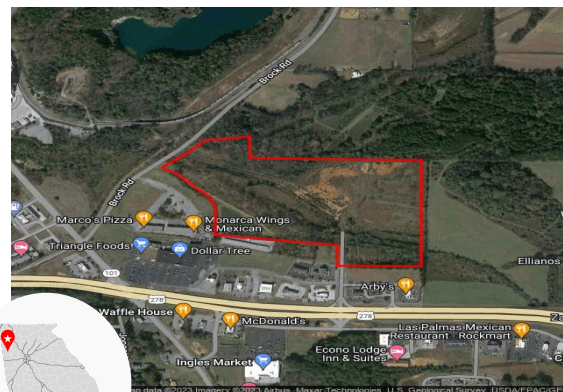
1



Property

| | | | |
|-------------------------|--------------|----------------------------|---------------|
| Total Acres: | 41 AC | Water on Site: | Yes |
| Remaining Acres: | 41 AC | Water Main Size: | 10 IN |
| Largest Tract: | 41 AC | Sewer on Site: | Yes |
| Sale or Lease: | Sale | Sewer Main Size: | 10 IN |
| Zoning: | Industrial | Gas on Site: | Yes |
| Former Use: | Agricultural | Gas Main Size: | 4 IN |
| GRAD Site: | No | Electric Provider:* | Georgia Power |

* Customer will have choice of provider if load is above 900 kW



Source: Georgia Power Economic Development



Taxes & Incentives

| | |
|-------------------------------------|-------------------------------|
| Job Tax Credit: | \$4,000/job |
| County Millage Rate: | 23.732 |
| County Property Tax: | \$9.49 per \$1000 FMV |
| Total Sales Tax: | 7% |
| County Freeport:¹ | 1: 100% 2: 100% 3: 100% 4: 0% |

Incentive Zones

New Market Tax Credit

Sources: Georgia Dept. of Revenue, Georgia Dept. of Community Affairs



Transportation

| | | | |
|-------------------------------|--|---------------------|--|
| International Airport: | Hartsfield-Jackson Atlanta International, 43.5 miles | Port 1: | Port of Savannah, 263.8 miles |
| Interstate: | I 75, 18.6 miles | Port 2: | Port of Brunswick, 284.8 miles |
| Rail Provider: | Not rail served | Inland Port: | Appalachian Regional Inland Port, 63.3 miles |
| | | Intermodal: | Whitaker Rail Yard, 25 miles |

Sources: Georgia Dept. of Transportation, Georgia Ports Authority



Workforce

| Laborforce | |
|--------------------------------|---------|
| Polk County: | 18,446 |
| Draw Area: ² | 240,054 |

| Unemployment Rate | |
|---------------------|------|
| Polk County: | 3.7% |
| Georgia: | 3.5% |
| US: | 3.8% |

| Average Weekly Wage | |
|--------------------------------|---------|
| Polk County: | \$825 |
| Draw Area: ² | \$901 |
| Georgia: | \$1,197 |
| US: | \$1,300 |

Source: Georgia Dept. of Labor



Demographics

| Population | |
|--------------------------------|---------|
| Polk County: | 43,590 |
| Draw Area: ² | 505,737 |

| Median Age | |
|---------------------|------|
| Polk County: | 38.2 |
| Georgia: | 37.5 |
| US: | 39.1 |

| Percent College Degree ³ | |
|-------------------------------------|-------|
| Polk County: | 21.7% |
| Georgia: | 44.9% |
| US: | 45.7% |

Source: ESRI 2023



Contacts

Property Contact:
Chris Thomas
Development Authority of Polk County
770-684-5686
chris@choosepolk.com

For more details, contact your local Georgia Power Community Development Manager:

Tamara Brock
Georgia Power Community & Economic Development
706-477-7009
twbrock@southernco.com

¹ Level 1 - Business inventory is exempt from state property taxes for the following categories - 1: raw materials, 2: finished goods, 3: finished goods awaiting shipment outside of GA, 4: fulfillment center stock in trade

² Includes county and adjoining counties ³ Population 25 and older with an Associates degree or higher
This information is provided "as is" without warranty of any kind either express or implied.

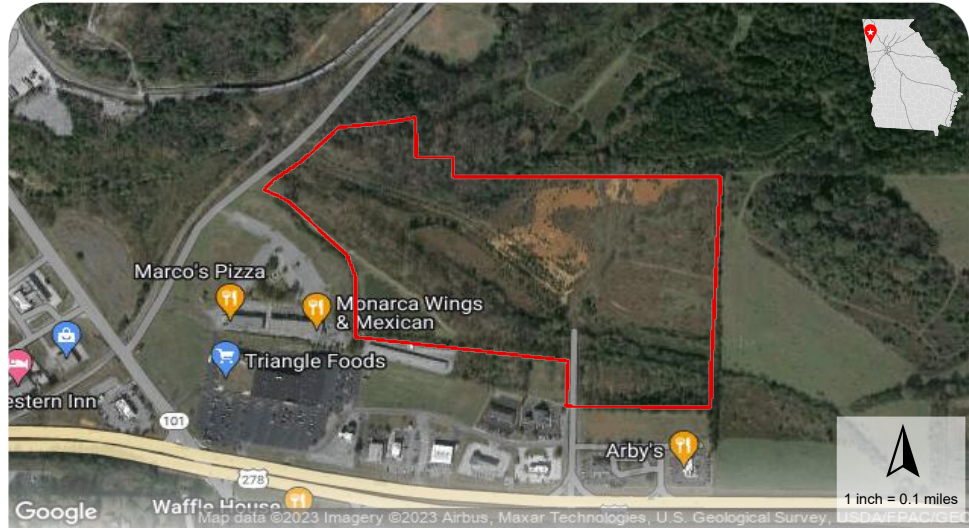
Rockmart Technology Park

Rockmart, GA 30153, Polk County

Location Map



Aerial Map



Environmental Map

